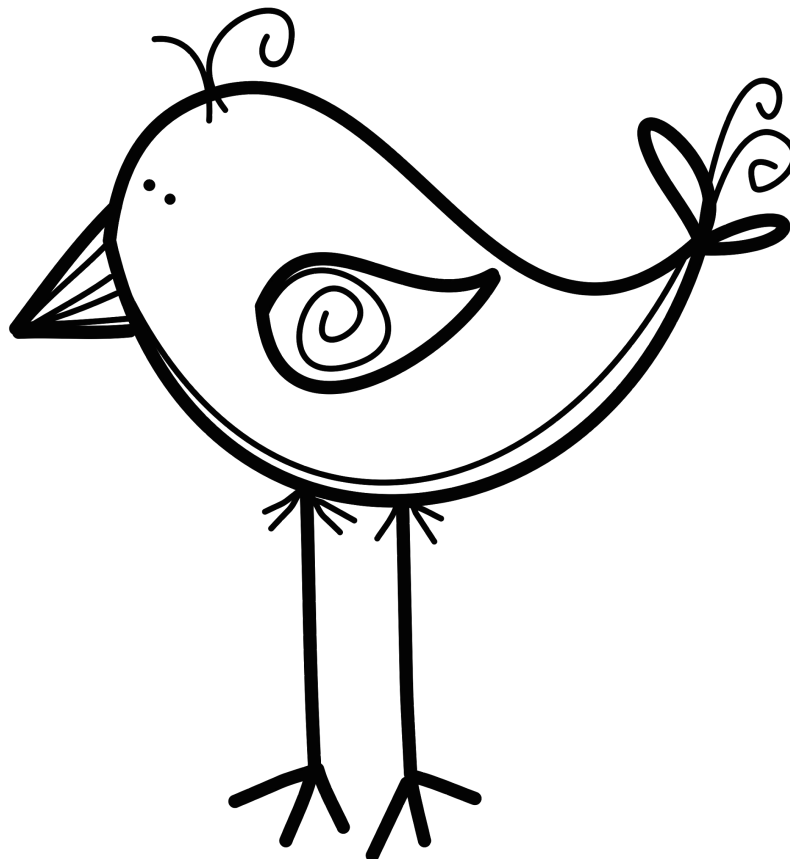


# Homework Package

Week Three  
Grade 1

Name \_\_\_\_\_ Date \_\_\_\_\_



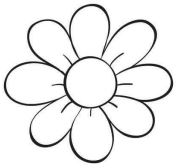
# Morning Work - Monday

Name \_\_\_\_\_

Date \_\_\_\_\_

For each question, indicate the correct answer. If you are able to print this paper you can circle the answer. If you are unable to print this paper you can write your answers on a separate paper.

## 1. Syllable



flower

1

2

3

4

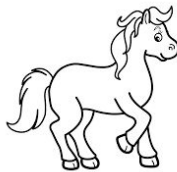
## 2. Rhyming



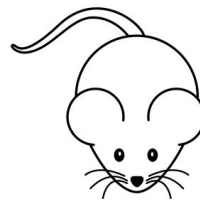
cake



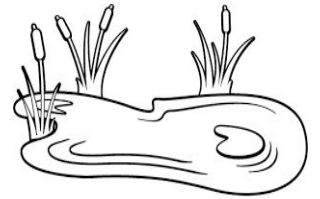
1



2



3



4

## 3. Beginning sound



star



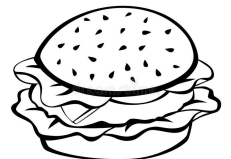
1



2



3

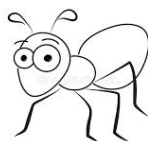


4

## 4. End sound



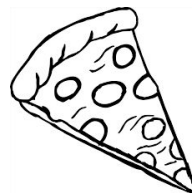
cup



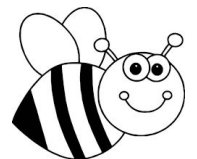
1



2



3



4

# Morning Work - Tuesday

Name \_\_\_\_\_

Date \_\_\_\_\_

For each question, indicate the correct answer. If you are able to print this paper you can circle the answer. If you are unable to print this paper you can write you answers on a seperate paper.

## 1. Syllable



Rabbit

1

2

3

4

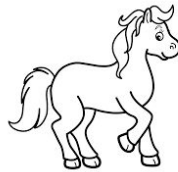
## 2. Rhyming



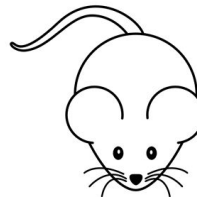
house



1



2

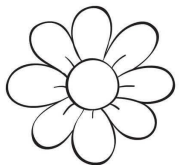


3



4

## 3. **B**eginning sound



flower



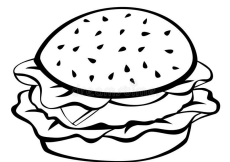
1



2

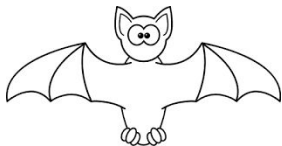


3

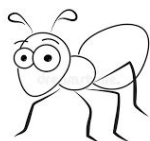


4

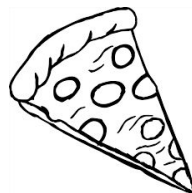
## 4. **E**nd sound



bat



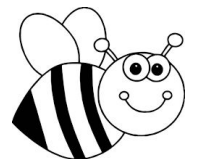
1



2



3



4

# Morning Work - Wednesday

Name \_\_\_\_\_

Date \_\_\_\_\_

For each question, indicate the correct answer. If you are able to print this paper you can circle the answer. If you are unable to print this paper you can write your answers on a separate paper.

## 1. Syllable



avocado

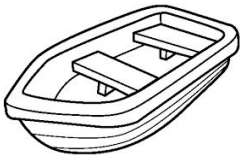
1

2

3

4

## 2. Rhyming



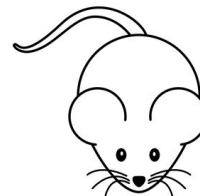
boat



1



2



3



4

## 3. **B**eginning sound



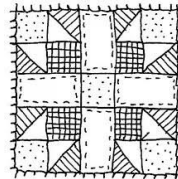
queen



1



2



3

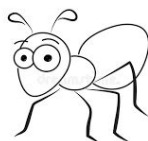


4

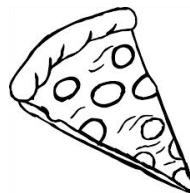
## 4. **E**nd sound



fox



1



2



3



4

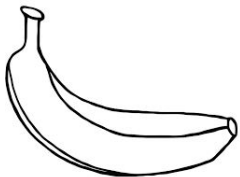
# Morning Work - Thursday

Name \_\_\_\_\_

Date \_\_\_\_\_

For each question, indicate the correct answer. If you are able to print this paper you can circle the answer. If you are unable to print this paper you can write your answers on a separate paper.

## 1. Syllable



Banana

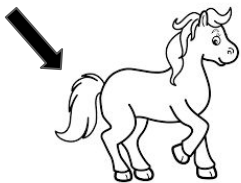
1

2

3

4

## 2. Rhyming



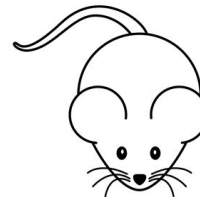
tail



1



2



3



4

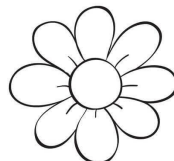
## 3. Beginning sound



tree



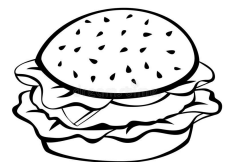
1



2

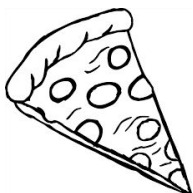


3

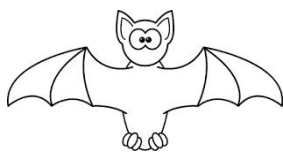


4

## 4. End sound



Pizza



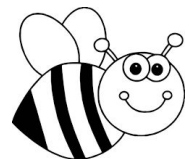
1



2



3



4

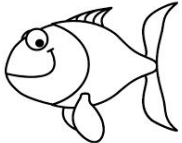
# Morning Work - Friday

Name \_\_\_\_\_

Date \_\_\_\_\_

For each question, indicate the correct answer. If you are able to print this paper you can circle the answer. If you are unable to print this paper you can write your answers on a separate paper.

## 1. Syllable



fish

1

2

3

4

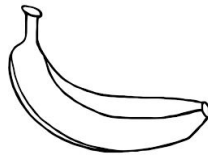
## 2. Rhyming



book



1



2

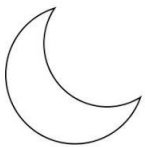


3

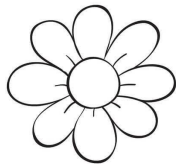


4

## 3. Beginning sound



moon



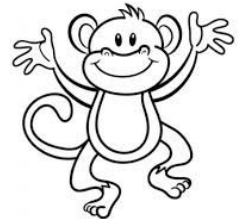
1



2

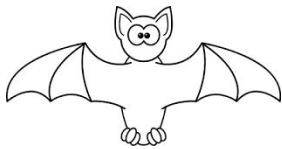


3

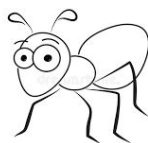


4

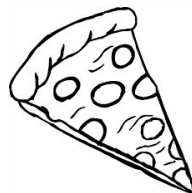
## 4. End sound



bat



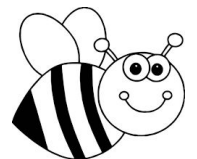
1



2



3



4

1:45 ~  $l \times w \times h$  ~  ~ 1 ft 6 in ~  $360^\circ$

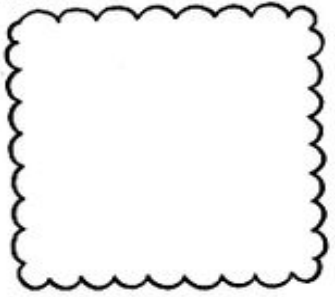
Pick a number or use the date to determine your number of the day.

DIY paper lamination:

You can use a large ziplock bag, plastic wrap, or clear packing tape to create reusable activity sheets.

Name: \_\_\_\_\_

### Number of the day



Find and color the number on the 100 chart.

1	2	3	4	5	6	7	8	9	10
11	12	13	14	15	16	17	18	19	20
21	22	23	24	25	26	27	28	29	30
31	32	33	34	35	36	37	38	39	40
41	42	43	44	45	46	47	48	49	50
51	52	53	54	55	56	57	58	59	60
61	62	63	64	65	66	67	68	69	70
71	72	73	74	75	76	77	78	79	80
81	82	83	84	85	86	87	89	89	90
91	92	93	94	95	96	97	98	99	100

Solve it.

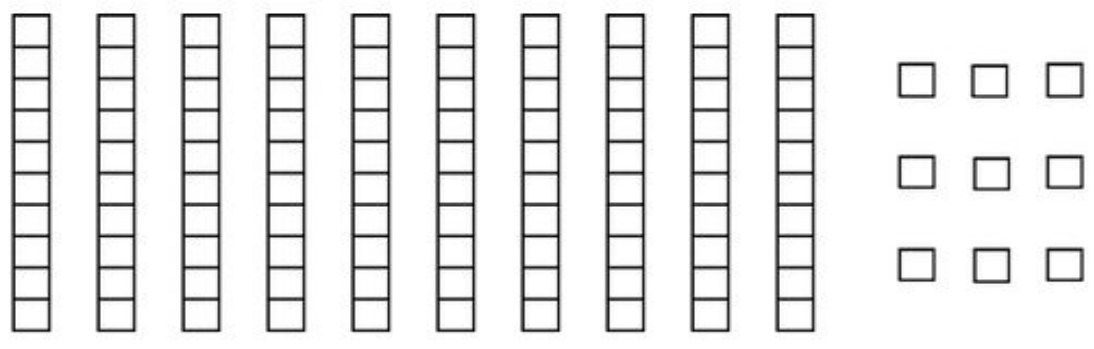
1 more

1 less

10 more

10 less

Color to show the number.



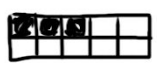
Write the number in words.

\_\_\_\_\_

1:45  
 $2 = \frac{1}{2}$   
 $4 \times 5 = 20$   
 $3 \sqrt{15}$   
 $5.26$   
 $360^\circ$

1:45  
 $1.65$   
 $2 \frac{1}{3} > 2 \frac{1}{5}$   
 $2 \frac{1}{3} > 2 \frac{1}{5}$   
 $A^2 + B^2 = C^2$   
 $4 \div 2 = 2$   
 $3 + 2 = 5$

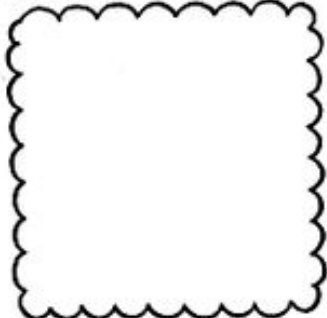
1:30 PM



1:45 ~  $l \times w \times h$  ~  ~ 1 ft 6 in ~  $360^\circ$

Name: \_\_\_\_\_

### Number of the day



Find and color the number on the 100 chart.

1	2	3	4	5	6	7	8	9	10
11	12	13	14	15	16	17	18	19	20
21	22	23	24	25	26	27	28	29	30
31	32	33	34	35	36	37	38	39	40
41	42	43	44	45	46	47	48	49	50
51	52	53	54	55	56	57	58	59	60
61	62	63	64	65	66	67	68	69	70
71	72	73	74	75	76	77	78	79	80
81	82	83	84	85	86	87	88	89	90
91	92	93	94	95	96	97	98	99	100

Solve it.

1 more

1 less

10 more

10 less

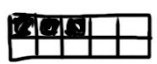
Color to show the number.

Write the number in words.

$1:45$   
 $l \times w \times h$   
 $1 \text{ ft } 6 \text{ in}$   
 $360^\circ$   
 $4 \times 5 = 20$   
 $3 \sqrt{15}$   
 $5.26$   
 $360^\circ$

$1:45$   
 $l \times w \times h$   
 $1 \text{ ft } 6 \text{ in}$   
 $360^\circ$   
 $2 \frac{1}{3} > 2 \frac{1}{5}$   
 $2 \frac{1}{3} > 2 \frac{1}{5}$   
 $A^2 + B^2 = C^2$   
 $4 \div 2 = 2$   
 $3 + 2 = 5$

1:30 PM





1:45

$l \times w \times h$



1 ft 6 in

$360^\circ$

# Addition to 20 Word Problems

There are many strategies that can be used to help solve math problems.  
Today we will be using the "draw a picture" strategy.

You have six teddy bears. You get four more. How many teddy bears do you have in total?  
Use the space below to draw a picture to help you solve the problem.

\_\_\_\_\_ + \_\_\_\_\_ = \_\_\_\_\_

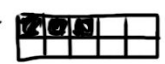
You have five books. You get seven more. How many books do you have in total?  
Use the space below to draw a picture to help you solve the problem.

\_\_\_\_\_ + \_\_\_\_\_ = \_\_\_\_\_

You have nine cookies. You get six more. How many cookies do you have in total?  
Use the space below to draw a picture to help you solve the problem.

\_\_\_\_\_ + \_\_\_\_\_ = \_\_\_\_\_

1:30 PM



$1 = \frac{1}{2}$   
 $4 \times 5 = 20$   
 $3 \sqrt{15}$   
 $\$5.26$   
 $360^\circ$

$\$1.65$   
 $2 \frac{1}{3} > 2 \frac{1}{5}$   
 $\leftarrow \frac{10}{10}$   
 $A^2 + B^2 = C^2$   
 $4 \div 2 = 2$   
 $3 + 2 = 5$

1:45

$l \times w \times h$



1 ft 6 in

$360^\circ$

# Addition to 20 Word Problems

There are many strategies that can be used to help solve math problems.  
Today we will be using the "draw a picture" strategy.

You have eight scoops of chocolate ice cream and five scoops of strawberry ice cream.  
How many scoops of ice cream do you have all together?  
Use the space below to draw a picture to help you solve the problem.

\_\_\_\_\_ + \_\_\_\_\_ = \_\_\_\_\_

You have six goldfish, five cats, and four dog. How many pets do you have all together?  
Use the space below to draw a picture to help you solve the problem.

\_\_\_\_\_ + \_\_\_\_\_ + \_\_\_\_\_ = \_\_\_\_\_

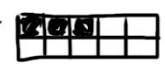
You have ten red cars, four blue cars, and three yellow cars. How many cars do you have all together?  
Use the space below to draw a picture to help you solve the problem.

\_\_\_\_\_ + \_\_\_\_\_ + \_\_\_\_\_ = \_\_\_\_\_

$\frac{1}{2} = \frac{2}{4}$   
 $4 \times 5 = 20$   
 $3 \sqrt{15}$   
 $\$5.26$   
 $360^\circ$

$\$1.65$   
 $2 \frac{1}{3} > 2 \frac{2}{3}$   
 $\leftarrow \frac{10}{10}$   
 $A^2 + B^2 = C^2$   
 $4 \div 2 = 2$   
 $3 + 2 = 5$

1:30 PM



1:45

$l \times w \times h$



1 ft 6 in

$360^\circ$

# Part - Part - Whole

## How I see the number 5

Circle the way that you see the dots for the number 5

$\frac{1}{2}$

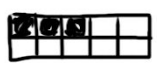
$4 \times 5 = 20$

$3 \sqrt{15}$

$\$5.26$

$360^\circ$

1:30 PM



$\$1.65$

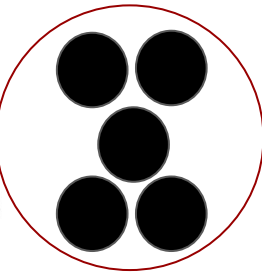
$2 \frac{1}{3} > 2 \frac{1}{5}$

$A^2 + B^2 = C^2$

$4 \div 2 = 2$



$3 + 2 = 5$



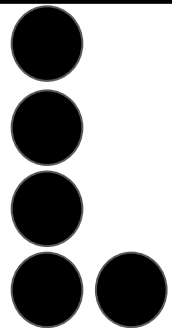
5

5

0

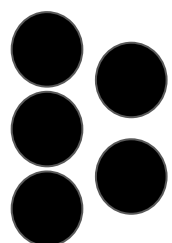
$\underline{\quad} 5 \underline{\quad} + \underline{\quad} 0 \underline{\quad} = \underline{\quad} 5 \underline{\quad}$

$\underline{\quad} 0 \underline{\quad} + \underline{\quad} 5 \underline{\quad} = \underline{\quad} 5 \underline{\quad}$



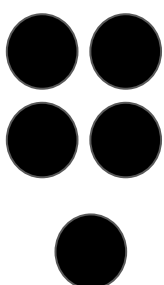
$\underline{\quad} + \underline{\quad} = \underline{\quad}$

$\underline{\quad} + \underline{\quad} = \underline{\quad}$



$\underline{\quad} + \underline{\quad} = \underline{\quad}$

$\underline{\quad} + \underline{\quad} = \underline{\quad}$



$\underline{\quad} + \underline{\quad} = \underline{\quad}$

$\underline{\quad} + \underline{\quad} = \underline{\quad}$

1:45

$l \times w \times h$



1 ft 6 in

$360^\circ$

# Part - Part - Whole

## How I see the number 5

Circle the way that you see the dots for the number 5

$\frac{1}{2}$

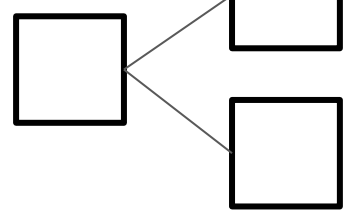
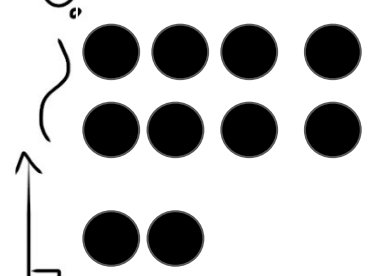
$4 \times 5$

$5 = 20$

$3 \sqrt{15}$

$\$5.26$

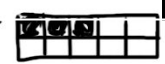
$360^\circ$



\_\_\_\_\_ + \_\_\_\_\_ = \_\_\_\_\_

\_\_\_\_\_ + \_\_\_\_\_ = \_\_\_\_\_

1:30 PM



$\$1.65$

$2 \frac{1}{3} > 2 \frac{1}{5}$

$\frac{1}{10}$

$A^2 + B^2 = C^2$

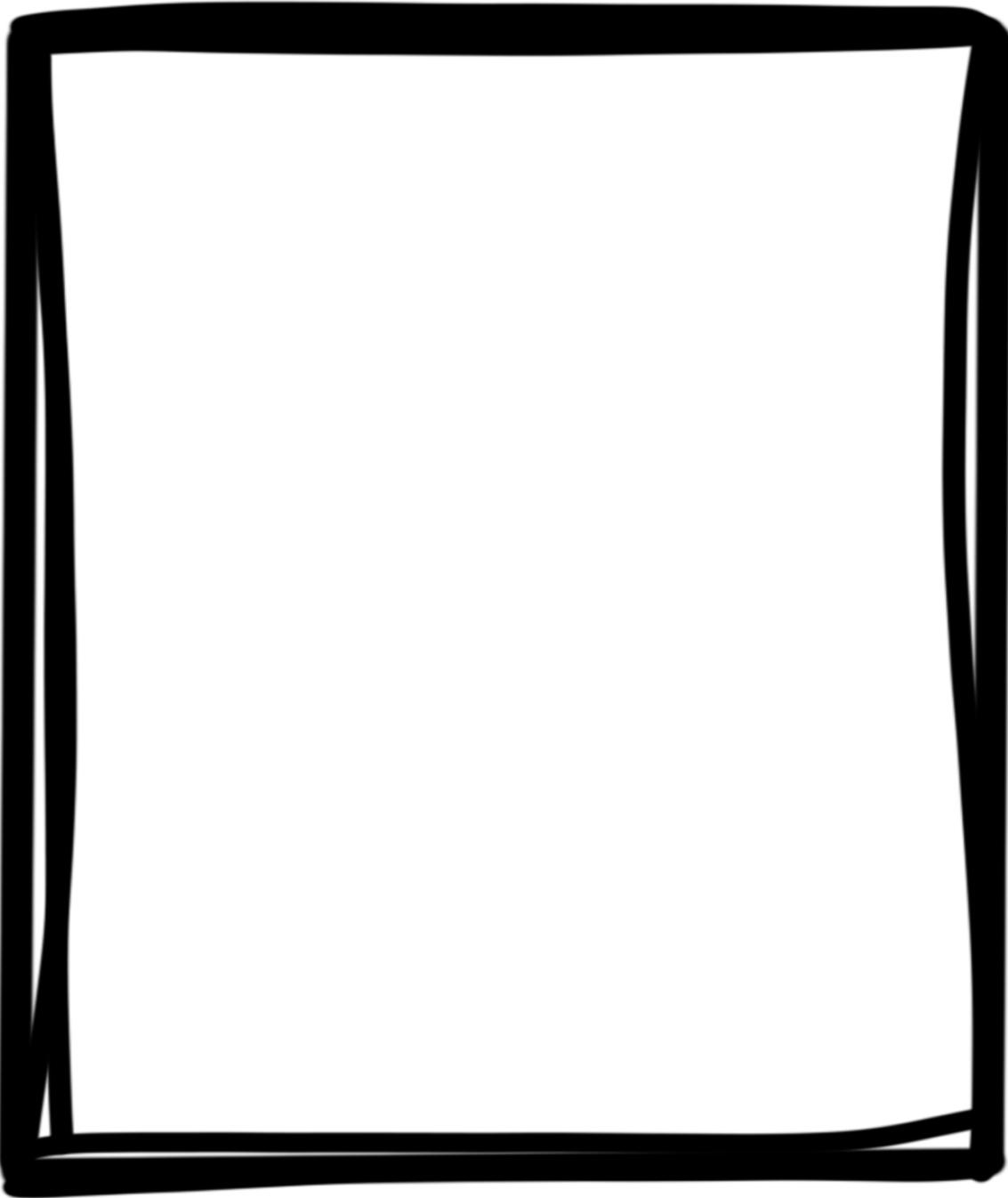
$4 \div 2 = 2$



$3 + 2 = 5$



# Journal



This weekend \_\_\_\_\_

\_\_\_\_\_

\_\_\_\_\_

# Jolly Phonics

## “th”

1. Watch the video [The TH Sound | Phonics Video | Scratch Garden](https://www.youtube.com/watch?v=V-cvZLNEBM) on Youtube. This Video explains, in a child friendly way, the two different sounds that “th” makes in the english language.  
<https://www.youtube.com/watch?v=V-cvZLNEBM>
2. Practise the action that goes along with the “th” sound. Pretend to be a rude clown and stick out your tongue a little for “th” (as is this) and further for “th” (as in Thumb).
3. Song:
  - a. Did you ever hear a rude clown make this sound and that sound? Did you ever hear a rude clown say “th” “th” “th” th”
4. Listen to the Jolly Phonics song for “th” and practise the action.  
<https://www.youtube.com/watch?v=26uXtUYssuo&t=8s> Starting at timestamp 12:10.

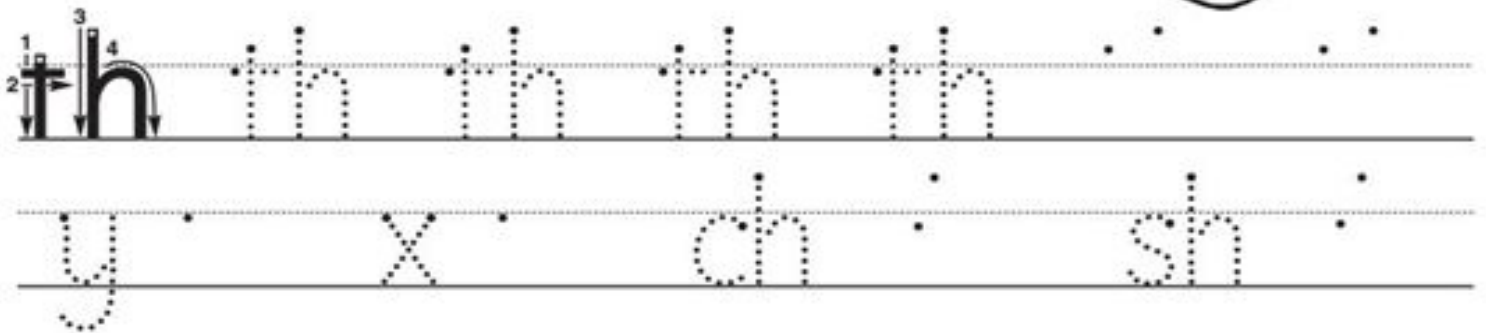
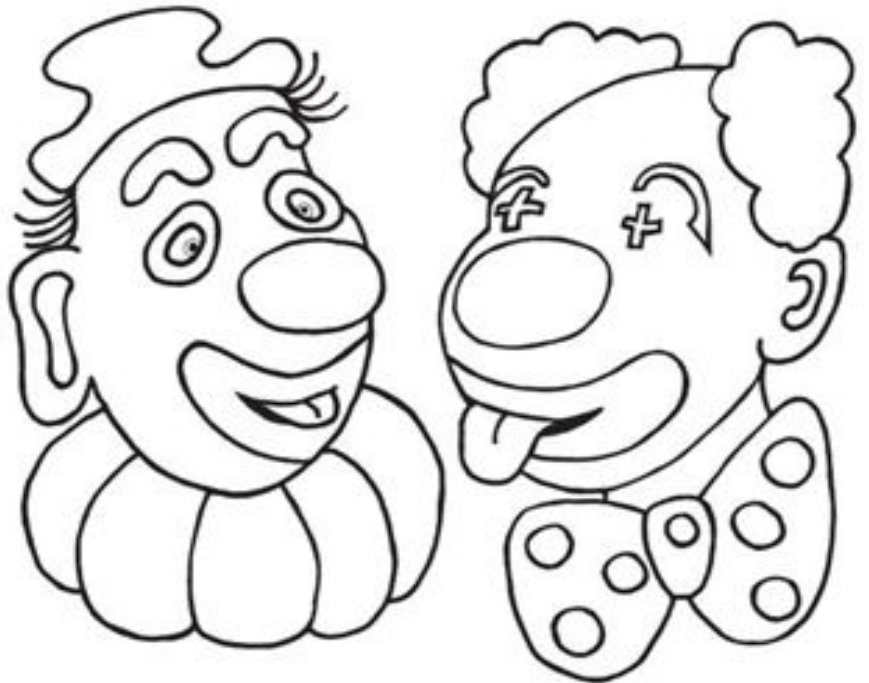
# th th

voiced and unvoiced th



## ACTION

Pretend to be a rude clown and stick out your tongue a little for *th* (as in *this*), and further for *th* (as in *thumb*).



this

moth

that

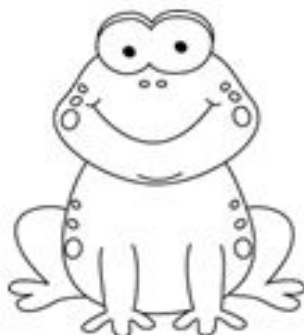
three

them

thin

Three of these pictures have a /th/ sound in them.  
Cross out the one that does not.

3

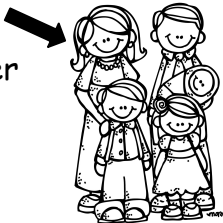


# Letter Sort

th

th

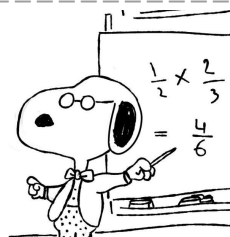

mother



feather



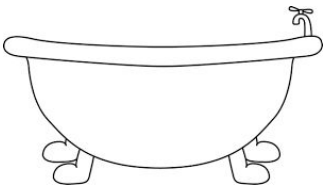
math



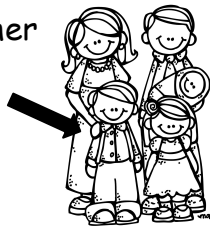
tooth



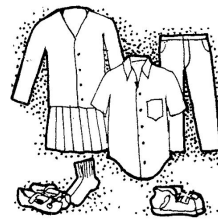
bath



brother



clothing



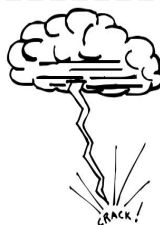
think



three



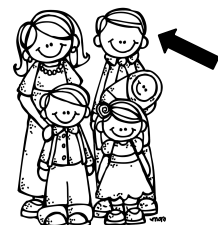
thunder



bathing suit

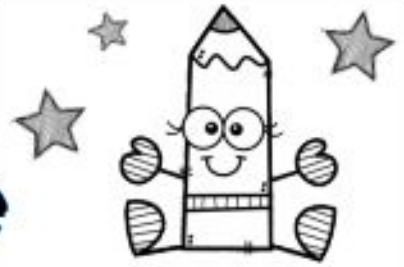


father





Name : \_\_\_\_\_



# Read and Write

Read all the sentences. Put  in the correct sentence and write it.

- Has dad my flower a.
- Dad my has a flower.
- Flower a has my dad.
- My dad has a flower.



Capital letter

Spaces

Punctuation

- I see ladybug a.
- Ladybug a see I.
- I see a ladybug.
- See a I ladybug.



Capital letter

Spaces

Punctuation

# Mixing Primary colours

Using whatever mixable medium you have on hand, mix primary colours to discover secondary colours. Make predictions before mixing. Were your predictions right?

